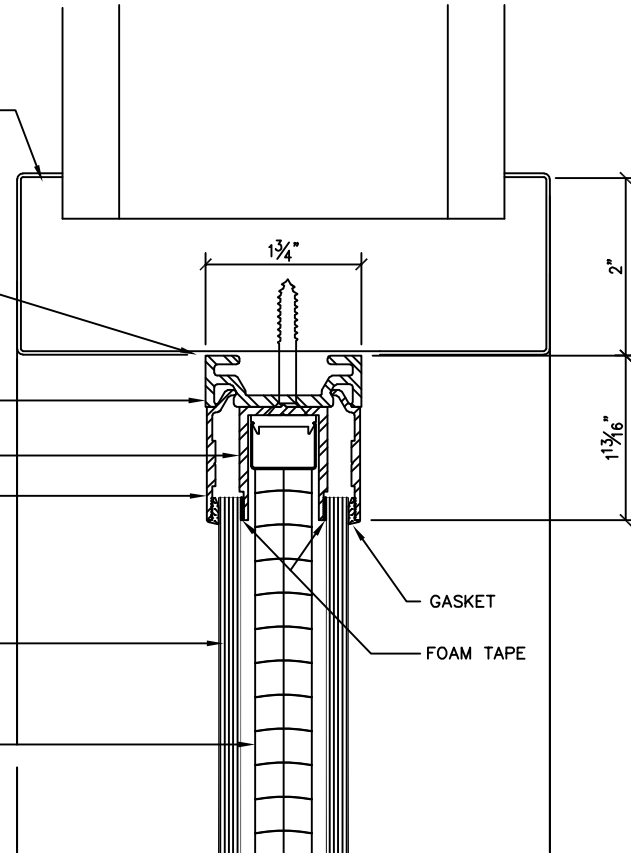


ELEVATION
REF: SCALE: 3" = 1'-0"

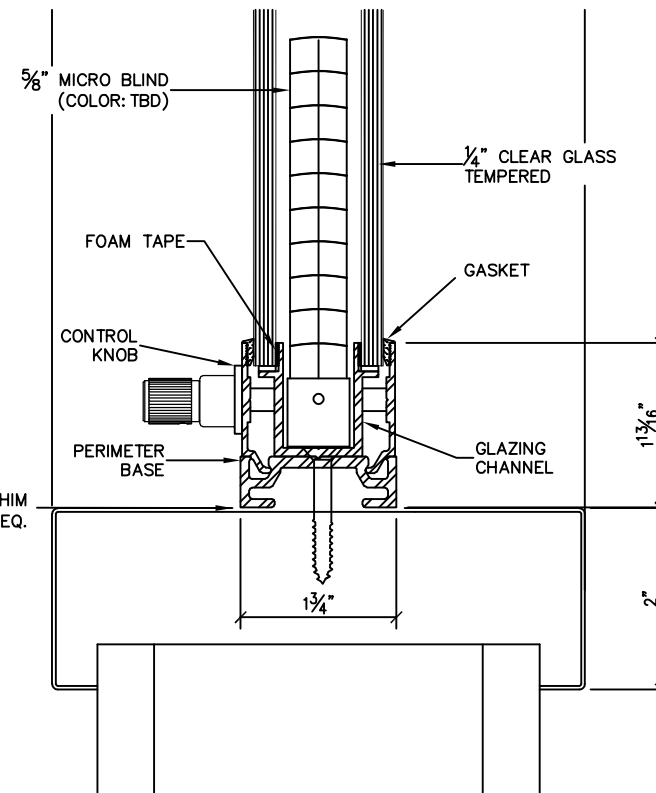
1/8" CLEARANCE/ SHIM AND CAULK AS REQ. (TYP)

HOLLOW METAL FRAMING & WALL SYSTEM BY OTHERS
1/8" CLEARANCE/ SHIM AND CAULK AS REQ.
PERIMETER BASE
GLAZING CHANNEL
FACE STOP
1/4" CLEAR GLASS TEMPERED
5/8" MICRO BLIND (COLOR: TBD)



SECTION "A"
REF: FULL SIZE

1/8" CLEARANCE/ SHIM AND CAULK AS REQ.



SECTION "B"
REF: FULL SIZE

1 THUS

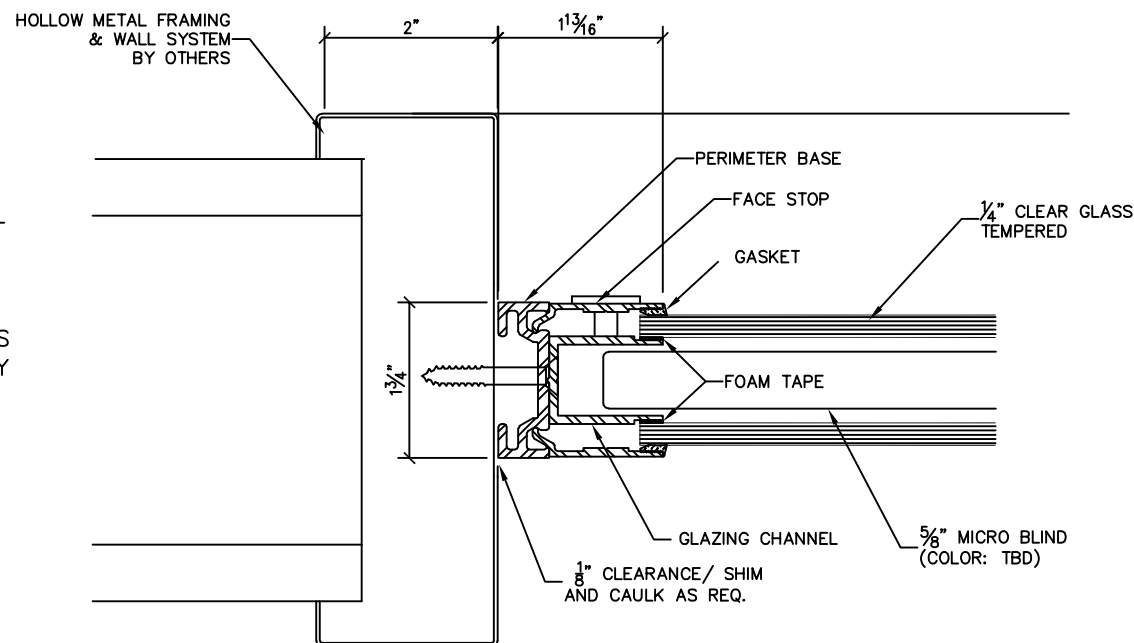
NOTES

- 1/4" CLEAR TEMPERED GLASS INTERIOR & EXTERIOR (BY CUSTOMER)
- ALUMINUM FRAME IN A DARK BRONZE ANODIZED FINISH
- 5/8" MICROBLIND (COLOR: TBD)
- SINGLE STRAIGHT CONTROL KNOB

NOTE TO ARCHITECT, GENERAL CONTRACTOR & ALPHA COMMERCIAL BLINDS CUSTOMERS

ALL DIMENSIONS & CONDITIONS MUST BE FIELD VERIFIED PRIOR TO FABRICATION

ALPHA COMMERCIAL BLINDS WILL ASSUME THESE SHOP DRAWINGS ARE CORRECT AS DRAWN IF THE ABOVE NOTE & "PLEASE VERIFY" NOTES THROUGHOUT THESE DRAWINGS ARE NOT ADDRESSED, NOT VERIFIED OR COMPLETELY IGNORED



SECTION "C"
REF: FULL SIZE

DATE _____

SIGNATURE OF APPROVAL OF DIMENSIONS AND CONDITIONS INDICATED ON THESE DRAWINGS ARE CORRECT AS SHOWN OR AS CORRECTED AND HEREBY AUTHORIZE FABICATION OF THE MATERIALS HEREON



ALPHA
Commercial Blinds

P.O. Box 30005
Little Rock, AR 72260-0005
10900 Otter Creek East Blvd.
Mabelvale, AR 72103
501-455-1324
501-455-0364

REVISIONS	JOB NAME: FRAMED BLIND UNIT IN SLICK FRAME
ADR CHECK:	LOCATION:
DRAWN:	ARCHITECT:
JOB NO:	CUSTOMER:
	DATE:
	SHEET NO: 1