

# BETWEEN GLASS BLINDS

FOR COMMERCIAL DOORS,  
AUTOMATIC SLIDERS,  
WINDOWS & BEHIND  
STOREFRONT/CURTAIN WALL



**ALPHA**  
Commercial Blinds

ALL OF THE **PRIVACY**,  
NONE OF THE **MAINTENANCE**.



BLIND UNITS WITH ALUMNINUM FRAMES

SEALED BLIND UNITS

CONTACT US FOR A QUOTE: CALL 501-455-1324, OR VISIT US AT [ALPHACOMMERCIALBLINDS.COM](http://ALPHACOMMERCIALBLINDS.COM)

## DESIGNED TO FIT ANY STANDARD COMMERCIAL DOOR

Alpha's entire blind system lines up with a 1-3/4" thick door, compared to other products that stick out past the door thickness. This makes it ideal for any aluminum, wood, or sliding door and is the reason our product is used in hospitals, schools and office buildings across the nation.



ALPHA'S BETWEEN GLASS BLINDS PROVIDE  
PRIVACY, SECURITY AND LIGHT CONTROL.

- STANDARD AND CUSTOM BLINDS
- SPECIALTY HARDWARE
- WIDE RANGE OF COLORS AND FINISHES
- MAINTENANCE-FREE
- NO WEAR AND TEAR
- EASY ACCESS – NO NEED TO REPLACE THE ENTIRE UNIT IF A REPAIR IS NEEDED

CONTACT US FOR A QUOTE: CALL 501-455-1324, OR VISIT US AT [ALPHACOMMERCIALBLINDS.COM](http://ALPHACOMMERCIALBLINDS.COM)



# SEALED BLIND UNITS

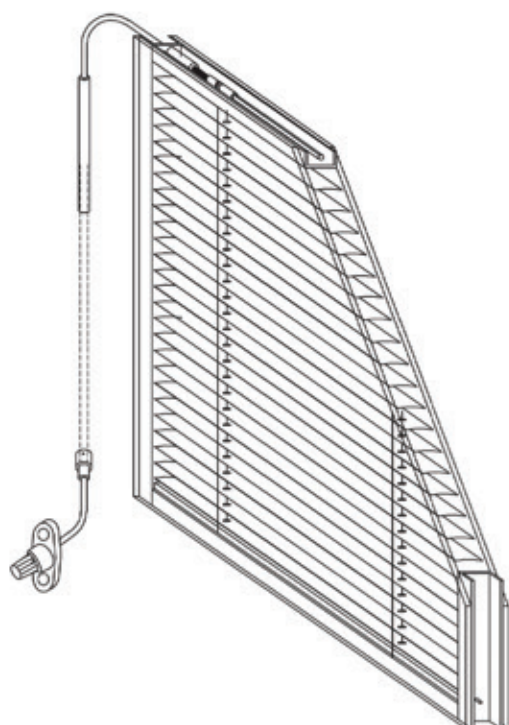
Alpha Commercial Blinds offers a sealed blind unit that provides privacy, security, and light control. These units are fully sealed and glazed with clear tempered glass and are custom made to fit easily within your stops or frame. These units come complete with head cables, rods and tilt knobs to create a functioning unit within your own frame. Absorbent is placed within the sill of the unit to prevent moisture. The integral blinds come in a variety of different colors and knob choices.

See far right page for blind options.

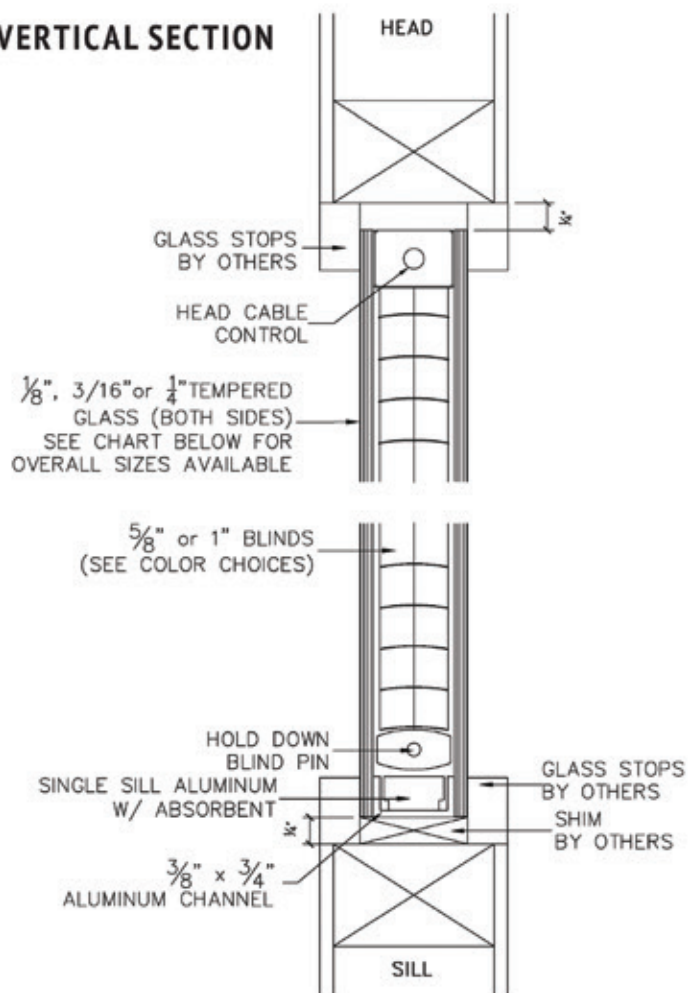
\*These units are designed for interior use only



| OVERALL UNIT THICKNESS BASED<br>ON BLIND & GLASS SIZE |            |             |            |
|---|------------|-------------|------------|
|   | 1/8" GLASS | 3/16" GLASS | 1/4" GLASS |
| 5/8" BLINDS   | 1" OA      | 1-1/8" OA   | 1-1/4" OA  |
| 1" BLINDS   | 1-1/2" OA  | 1-5/8" OA   | 1-3/4" OA  |



## VERTICAL SECTION



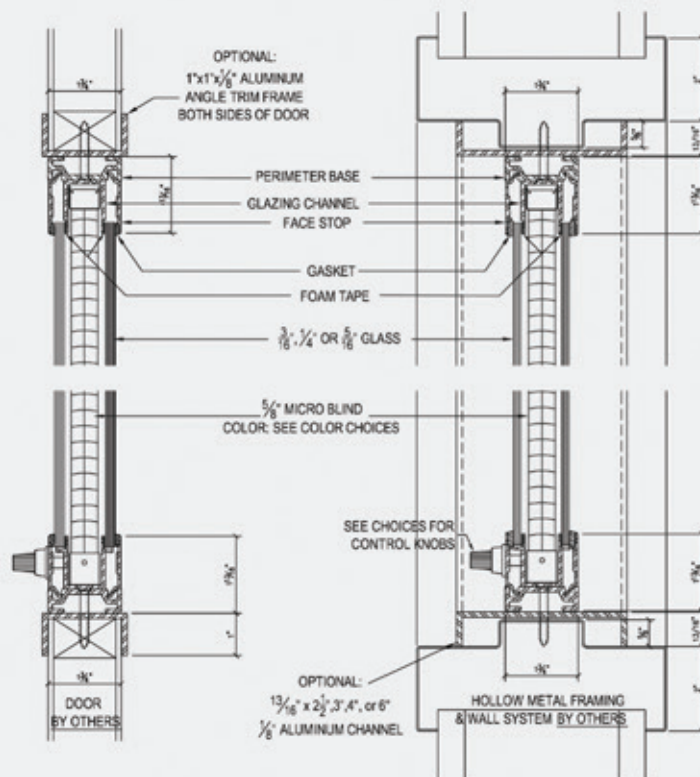
# FRAMED BLIND UNITS

Alpha Commercial Blinds also offers a framed unit. This unit has a 1-3/4" frame of extruded anodized aluminum that fits perfectly in commercial door lites. They also can be installed in aluminum or hollow metal frames or on the interior of curtain wall. This unit ships easily and affordably because the frames are knocked down for field assembly and glazing. Adapters or trim can be fabricated to cover HM door frame rabbets or to trim any door cutout. The integral blinds built into the frame come in a variety of different colors and knob choices. See far right page for blind options and frame finish options.

\*These units are designed for interior use only



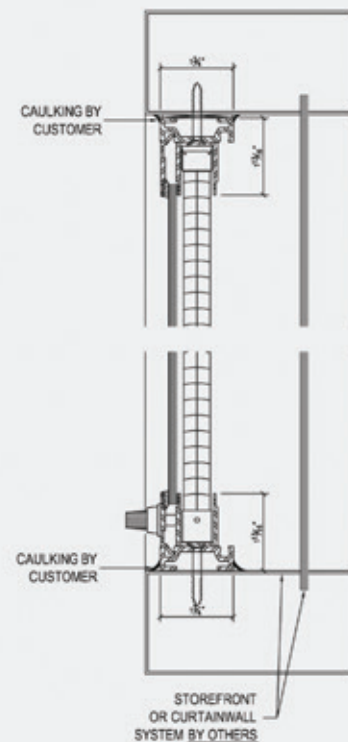
## DUAL GLAZING



THROUGH ALUMINUM  
SWING OR SLIDING DOORS

THROUGH HOLLOW METAL FRAME

## SINGLE GLAZING



BEHIND EXTERIOR GLASS SYSTEM  
NEW OR EXISTING

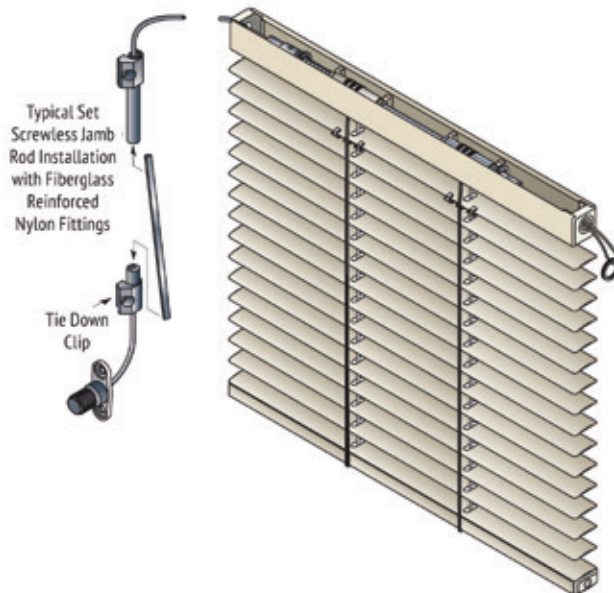
# BLIND AND FINISH OPTIONS

## METAL BLIND COLOR SELECTIONS

\*If match is critical, please request a color selector of actual slat samples.



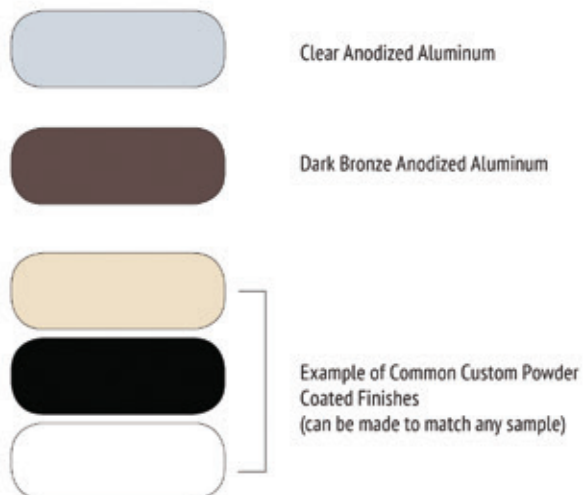
## BLIND DIAGRAM



## CONTROL KNOBS



## FRAME FINISHES





# ALPHA BETWEEN GLASS BLINDS SPECIFICATIONS

## PART I: GENERAL

Work required includes horizontal louver blinds for installation between two glass panes and supplementary items necessary to complete their proper installation. Glass to enclose blinds and window frames are specified in the Material section.

### SUBMITTALS

- **Product Data:** For each type of product indicated, include styles and material descriptions, construction details and dimensions of individual components and profiles, features, finishes and operating instructions.
- **Shop Drawing:** Show location and extent of between glass blinds. Include elevations, sections, details and dimensions not shown in Product Data. Show installation details, mountings and attachment to other work, operational clearances and relationship to adjoining work.
- **Samples for Initial Selection:** Provide for each colored component of each type of horizontal louver blind indicated, including accessories involving color selection.
- **Samples for Verification:** Louver slat, not less than 12 inches long, prepared on samples from the same material to be used for the work.
- **Window Treatment Schedule:** Include between glass blinds in schedule using the same room designations indicated on Shop Drawings.

### QUALITY ASSURANCE

- **Single Source:** Obtain horizontal louver blinds through one source from a single manufacturer.
- **Product Standard:** Provide horizontal louver blinds complying with WACI 625 Series.

### DELIVERY, STORAGE AND HANDLING

Deliver blinds in factory packages that are marked with manufacturer name, product name and location of installation (based on the same room designations indicated on Shop Drawings and in a window treatment schedule).

### PROJECT CONDITIONS

- **Environmental Considerations:** Do not install blinds until construction is complete and ambient temperature and humidity conditions are maintained at the levels indicated for the project based on its intended use. Do not install blinds until wet and dirty work in spaces, such as painting, is complete.
- **Field Measurements:** Verify dimensions of other construction by field measurements before fabrication and indicated measurements on Shop Drawings.

## PART II: PRODUCTS

Alpha Commercial Blinds will provide the appropriate materials according to the Conditions of the Contract and Division 1 Specification Sections.

## MATERIAL

- **Louver Slats:** Aluminum, alloy and tempered recommended by the manufacturer for type of use and finish indicated. Includes crowned profile and radius corners.
  - a. Nominal slat width: 0.625 inch for miniblinds.
  - b. Slat spacing not less than 24 slats per foot.
  - c. Nominal slat thickness: Not less than 0.006 inch.
  - d. Slat finish: True white, unless otherwise indicated.
- **Tilt Control Knobs:** As selected by architect from manufacturer's standard selection.
- **Lift Cord:** Concealed in framing unless indicated otherwise.
- **Framing:** (Not used in sealed units.) 1-3/4" wide by 1-13/16" tall, 6063-T5 aluminum extruded perimeter framing with removable glass stops.
- **Finishes:** (Not used in sealed units.) Framing finish to be Architectural Class 1 clear anodic coating conforming to Aluminum Association standards unless otherwise noted. Additional anodized or painted finishes available if indicated by architect.
- **Glass:** To be 3/16" clear tempered (1/8" clear tempered standard for sealed units) unless otherwise indicated. Glass shall be in compliance with the requirements set forth by ASTM C-1048-91, Quality Q3, CPSC standard of Architectural Glazing Material 16CFR 1201, 1,2, and ANSI Z97.1 for fabrication and tempering.

## PART III: EXECUTION EXAMINATION

- Examine substrates, areas and conditions with the installer present for compliance with requirements for installation tolerances, operational clearances and other conditions affecting performance.
- Do not proceed with work until unsatisfactory conditions have been corrected in a manner acceptable to installer. Starting work will be dependent on applicator's acceptance of surface conditions.

## INSTALLATION

- Install in accordance with manufacturer's latest published requirements, instructions, specifications, details and approved Shop Drawings.
- Set units square, level, plumb and aligned with surrounding construction.
- Securely attach framing with adequate fasteners appropriate to the supporting substrate material, as recommended by between glass blind manufacturer's instructions.
- Perform the work carefully so as not to mar the units or surrounding work. Damaged units or surrounding materials damaged during installation shall be repaired or replaced.

## ADJUSTING AND CLEANING

- Adjust horizontal louver blinds to operate smoothly, easily, safely and free from binding prior to installation of glass.
- Clean blind surfaces and interior glass surfaces just prior to enclosing between glass, according to manufacturer's written instructions.



**ALPHA**  
Commercial Blinds

PO Box 30005 • Little Rock, AR 72260-0005  
10900 Otter Creek East Blvd. • Mabelvale, AR 72103  
501-455-1324 • [alphacommercialblinds.com](http://alphacommercialblinds.com)